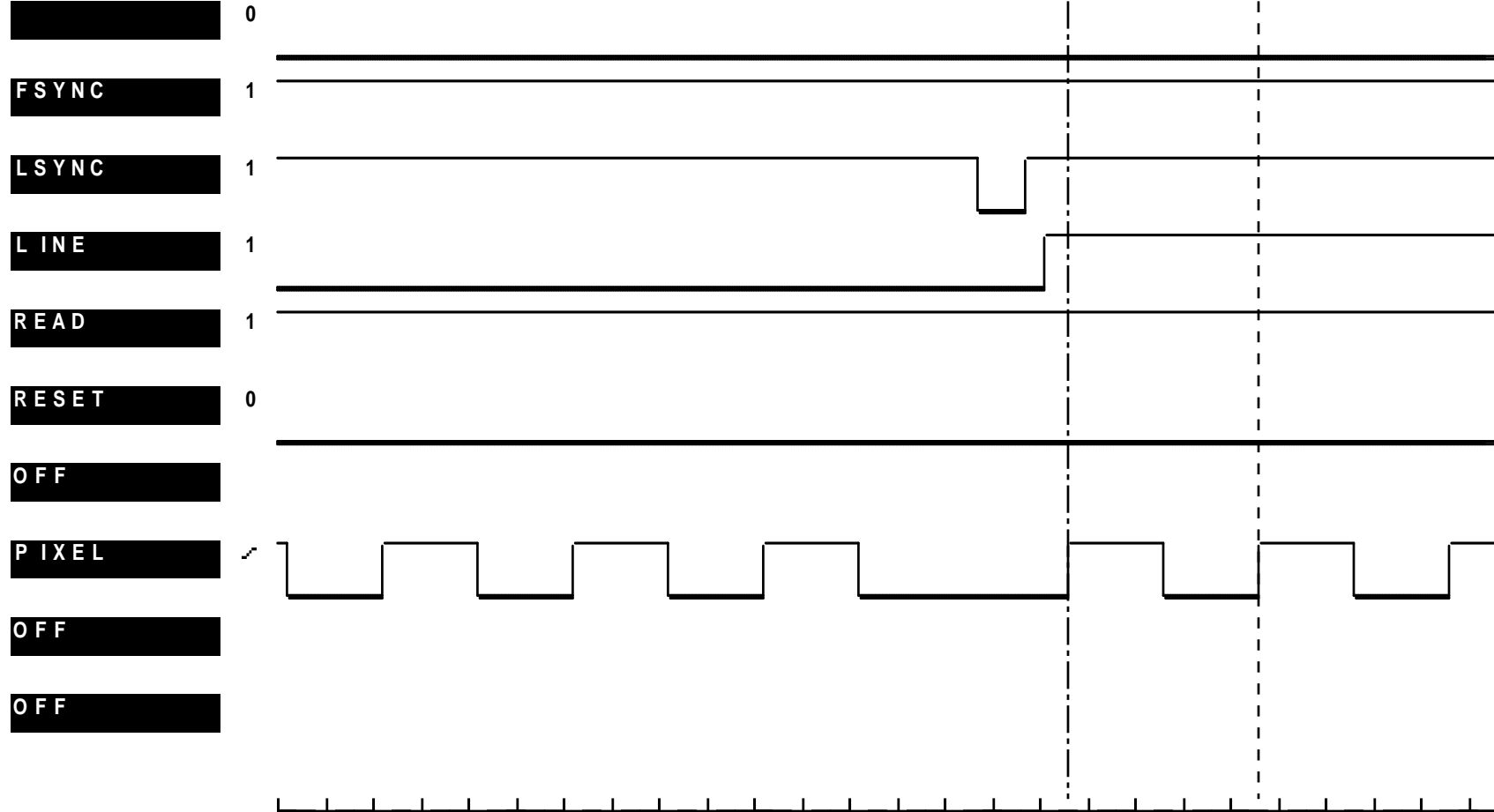


DISPLAY: TIMING DIAGRAM

Knob = Scroll

Memory Displayed: ACQMEM
First Trace Displayed: 000
Time/Div: 500 nS
STATE Display: 2F

Cursor 1 = +2251870 μ s
Cursor 2 = +2251868 μ s
Cursor \blacktriangle = 2.000 μ s



F1 Search Search	F2 Change Cursors	F3 Acqmem To Refmem	F4 Default Display	F5 Search Def.	F6 Auxiliary Data	F7 Display Formats	F8 Split Display
------------------------	-------------------------	---------------------------	--------------------------	----------------------	-------------------------	--------------------------	------------------------