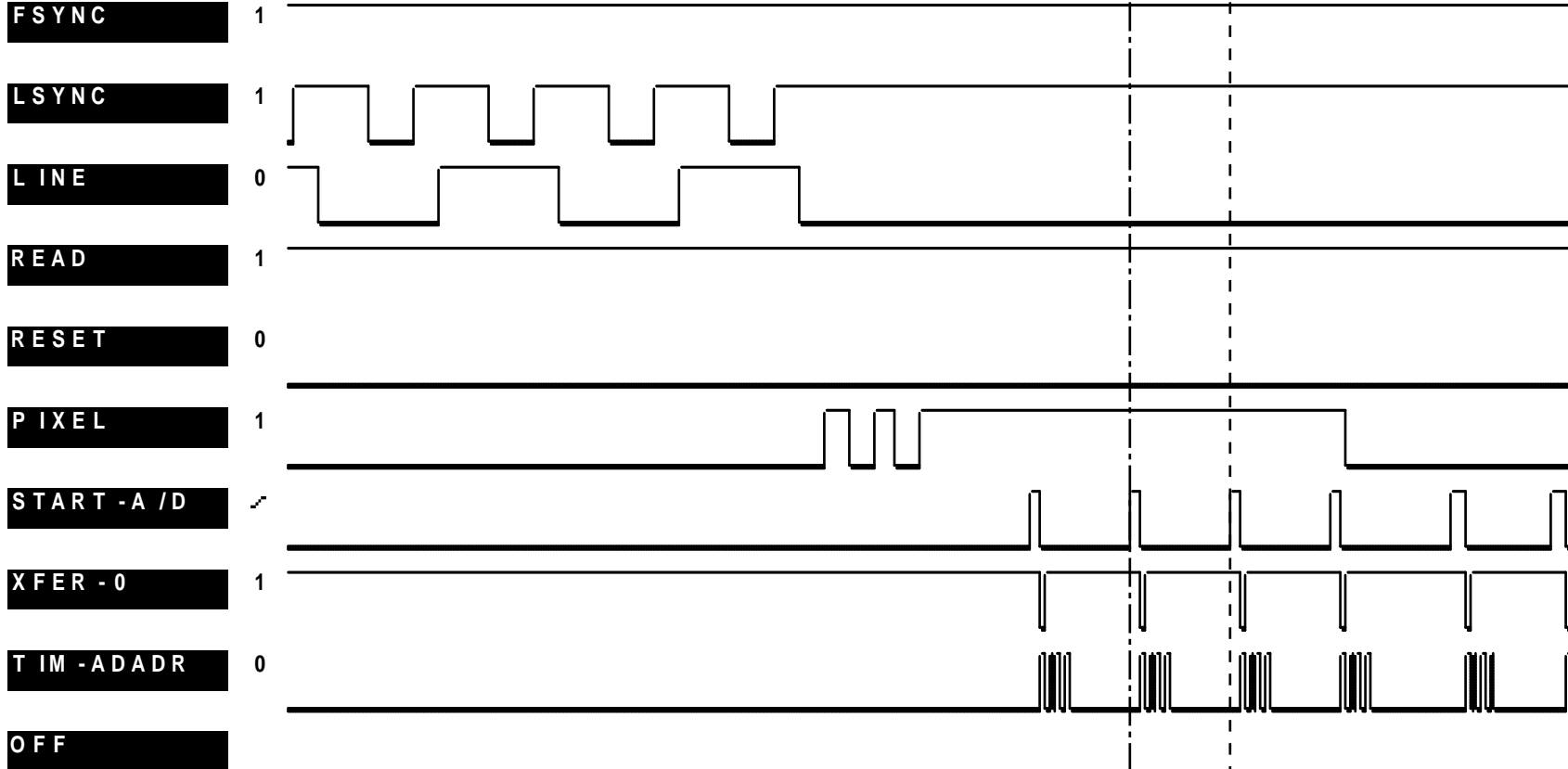


DISPLAY: TIMING DIAGRAM

Knob = Scroll

Memory Displayed: ACQMEM  
First Trace Displayed: 000  
Time/Div: 500 nS  
Cursor 1 = +0013860 ns  
Cursor 2 = +0012550 ns  
Cursor ▲ = 1.000 μs

STATE Display: 01AB



F1 Search Search	F2 Change Cursors	F3 Acqmem To Refmem	F4 Default Display	F5 Search Def.	F6 Auxiliary Data	F7 Display Formats	F8 Split Display
------------------------	-------------------------	---------------------------	--------------------------	----------------------	-------------------------	--------------------------	------------------------