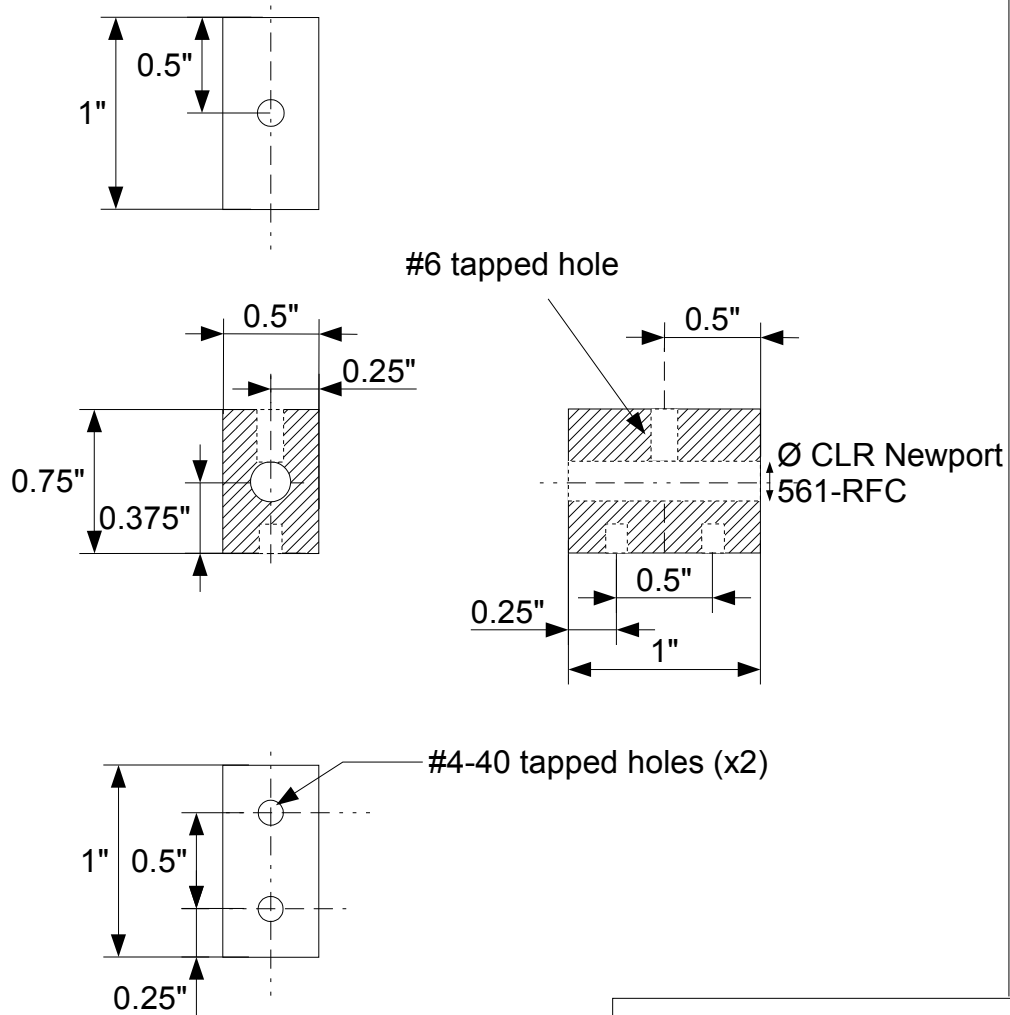
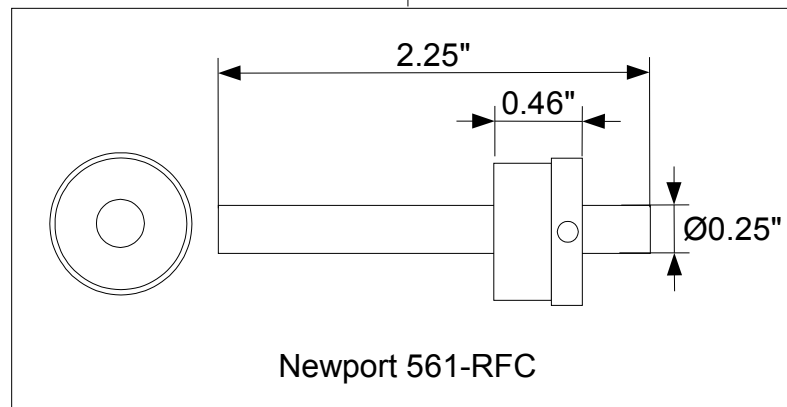
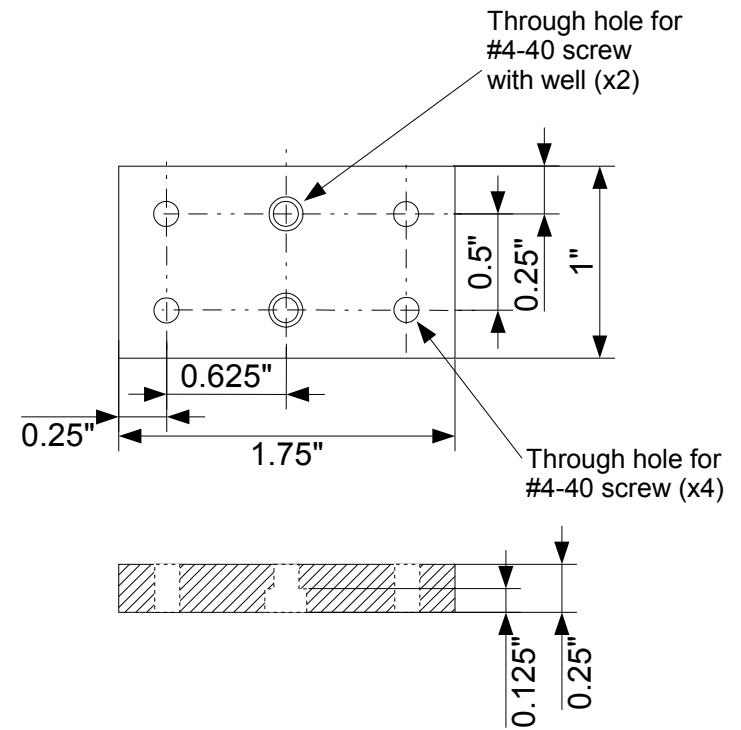


561-RFC holder

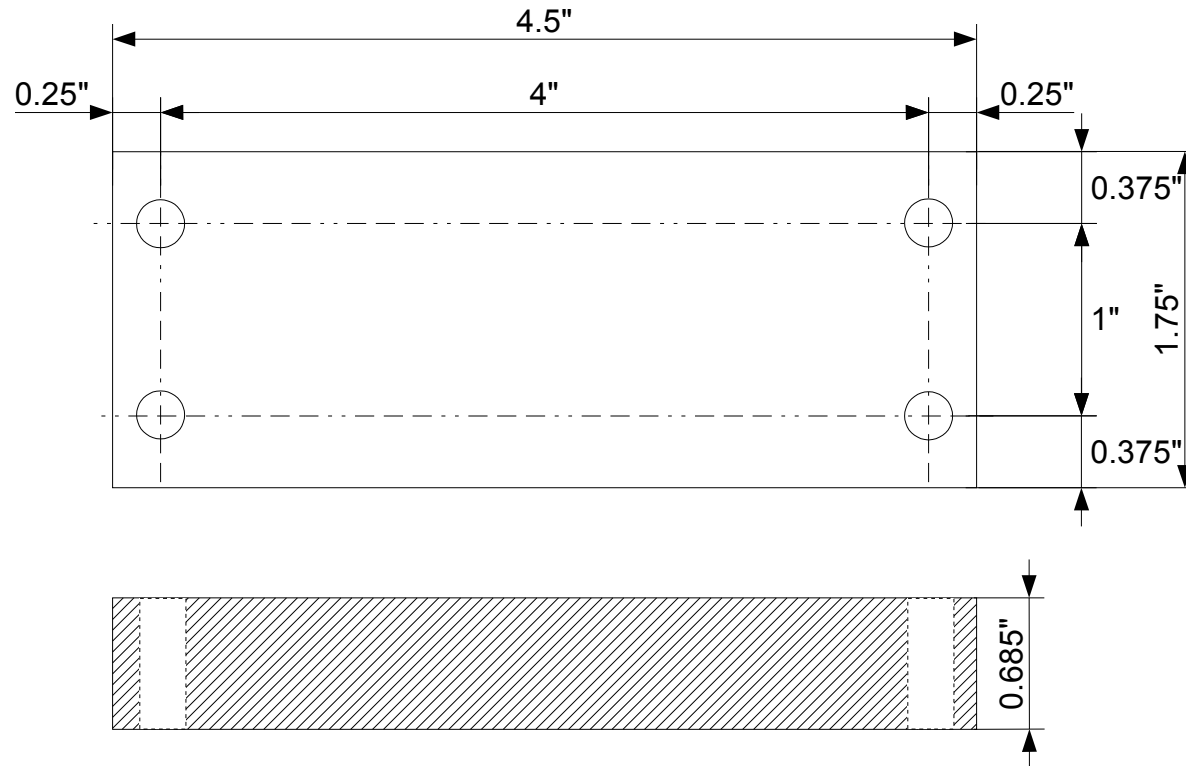


561-RFC holder/luminos mount interface plate



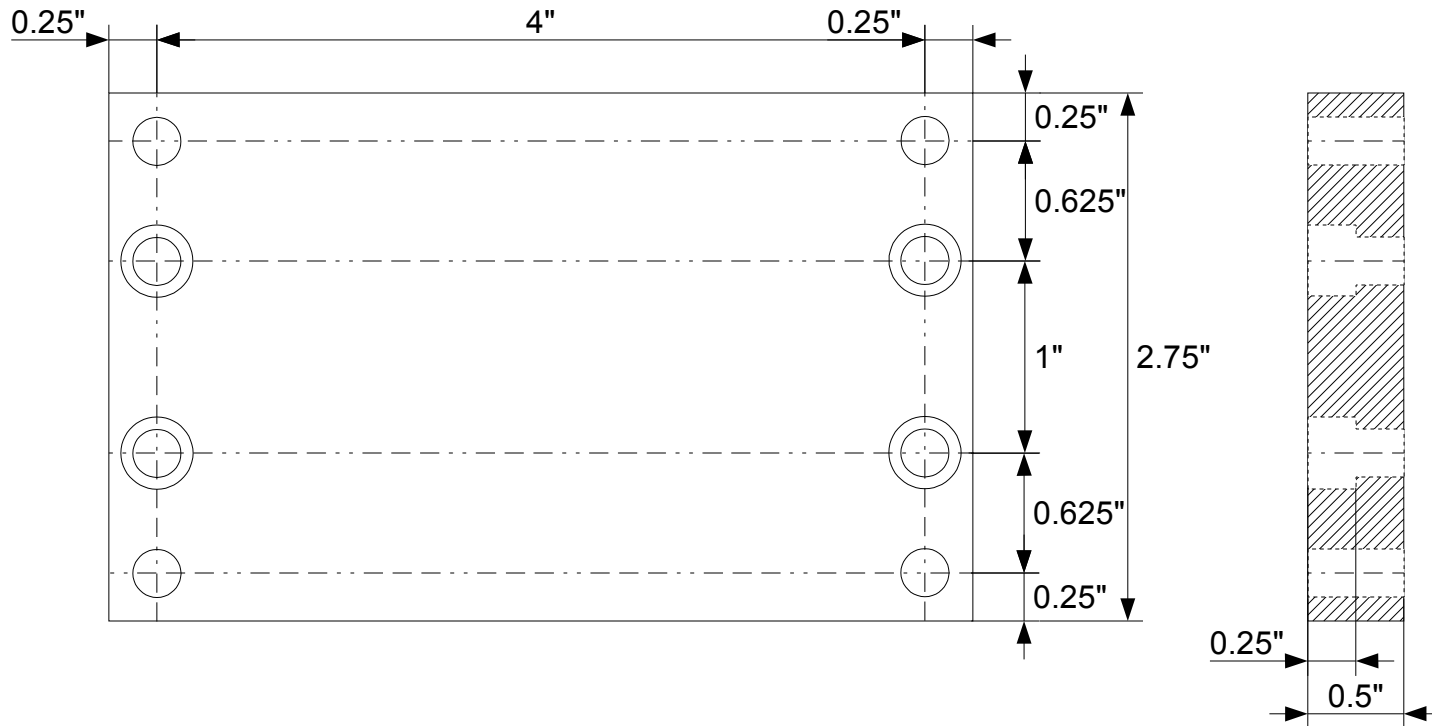
Note: the dimensions on the drawing in Newport catalog are incorrect

luminos mount/fixation plate interface bloc



○ 1/4 – 20 tapped holes

Interface plate



- 1/4 – 20 through holes x4
- ⊙ 1/4 – 20 through holes with well x4

